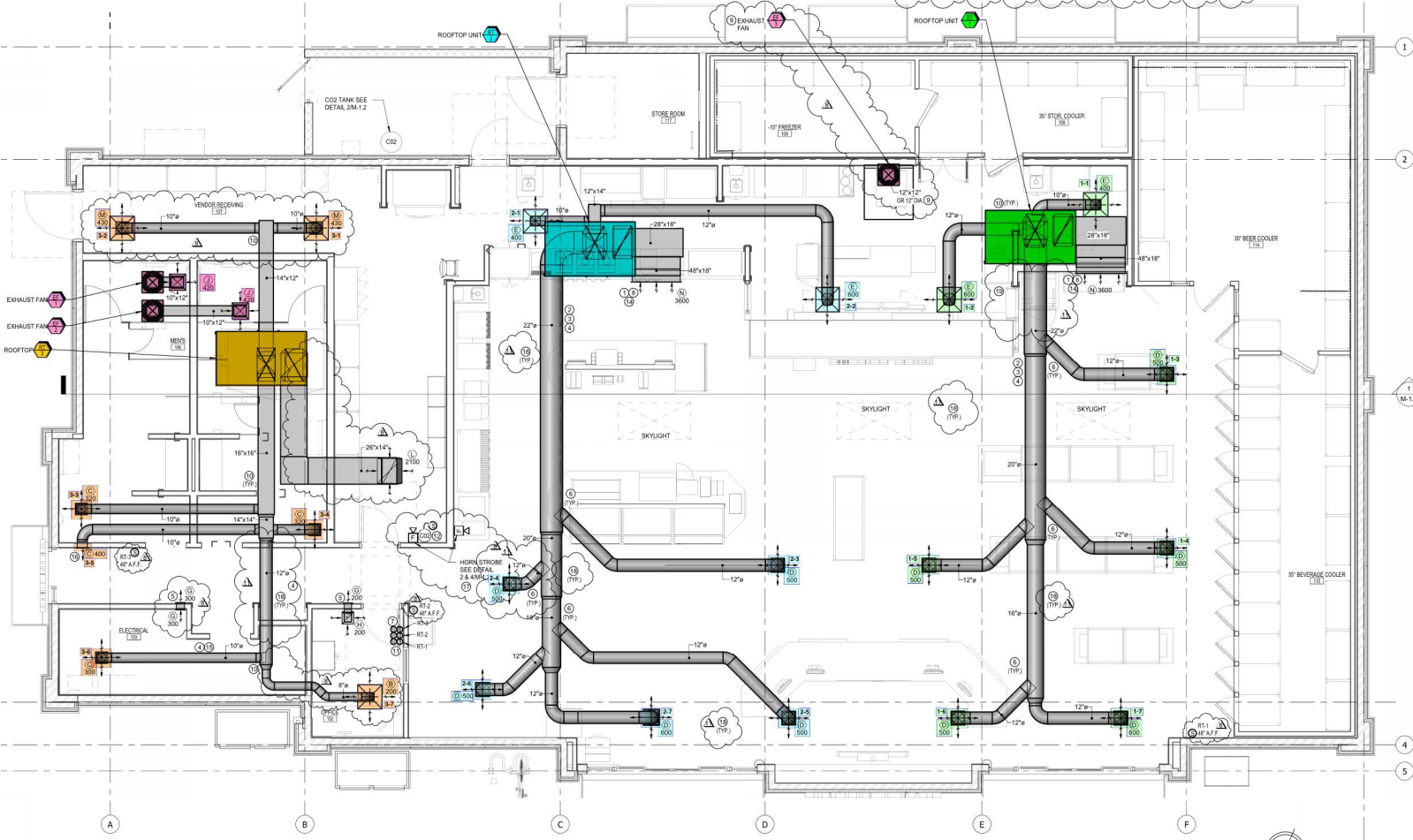


- 4 DUCTWORK SHALL BE PAINT BLACK OR PRIMED FOR PAINTING
- 5 PROVIDE 3" X 4" DUCT SLEEVE OPENING AT TRUSS ELEVATION FOR RETURN AIR. INSTALL TRANSFER GRILLE FINE ANGLED UPWARD.
- 6 INSTALL BALANCE DAMPER ON TOP OF DUCT TO HIDE FROM PUBLIC EYE.
- 7 LOCATE THERMOSTATS IN OFFICE. COORDINATE LOCATION WITH CONTRACTOR.
- 8 RETURN DUCT SHALL BE INSULATED PER SPECIFICATION WITH 1" R-6 SILIKER.
- 9 EXHAUST DUCT SHALL BE ALUMINUM. FOLLOW SMACNA STANDARDS FOR GAUGE. PROVIDE DUCT CLEANOUT ON HOOD EXHAUST DUCT AT EACH CHANGE IN DIRECTION PER UAC.
- 10 INSTALL BALANCING DAMPER ON EACH BRANCH DUCT TAKE-OFF.
- 11 INSTALL TEST AND RESET SWITCH ON WALL INSIDE OFFICE.
- 12 INSTALL CO2 DETECTOR ON THE WALL AND SENSORS 12" ABOVE THE BAG AND THE BOX FLOOR. (INSTALL CO2 EQUIPMENT PER MANUFACTURER'S INSTALLATION MANUAL & DET.
- 14 LOCATE BRANCH GRILLE CENTERED BETWEEN BRINK TRUSS. MAIN RETURN GRILLE IS JAMBIE FOOT.
- 15 MAIN SUPPLY DUCT IN CENTER OF ELECTRICAL ROOM 30' CLEAR OF PANELS AND 6" ABOVE PANELS.
- 16 ALL GRILLE FACES DOWNWARD.
- 17 PROVIDE REMOTE PRESSURE TAP FOR CO2 DETECTION SYSTEM AT 11" A.F.F. AND 12" FROM THE END OF THE WALL.
- 18 INSTALL ALL SUPPLY DUCT SHALL BE INSTALLED AS HIGH AS POSSIBLE TO SEAT DECEAS.
- 19 INSTALL MAIN SUPPLY DUCT FROM RT-1 AS HIGH AS POSSIBLE TO BEYOND TRUSS TO BE ABLE TO INSTALL UNLAP PAPER.



1 MECHANICAL FLOOR PLAN
 M-1.1 1/4" = 1'-0"